

OREGON WINE

WILLAMETTE VALLEY



OREGON
WINE
BOARD

UPDATED 4.1.17



This work is licensed under the Creative Commons Attribution 4.0 International License.
To view a copy of this license, visit <http://creativecommons.org/licenses/by/4.0/>.

CELEBRATED, RENOWNED, EXQUISITE.

Oregon's Willamette Valley is, at this point, synonymous with glorious Pinot noir. No other grape is as reflective of climatic and site differences, and small distances in the valley can yield wines of distinctly different character, each captivating in its own way.

WHERE IN THE WORLD IS OREGON?

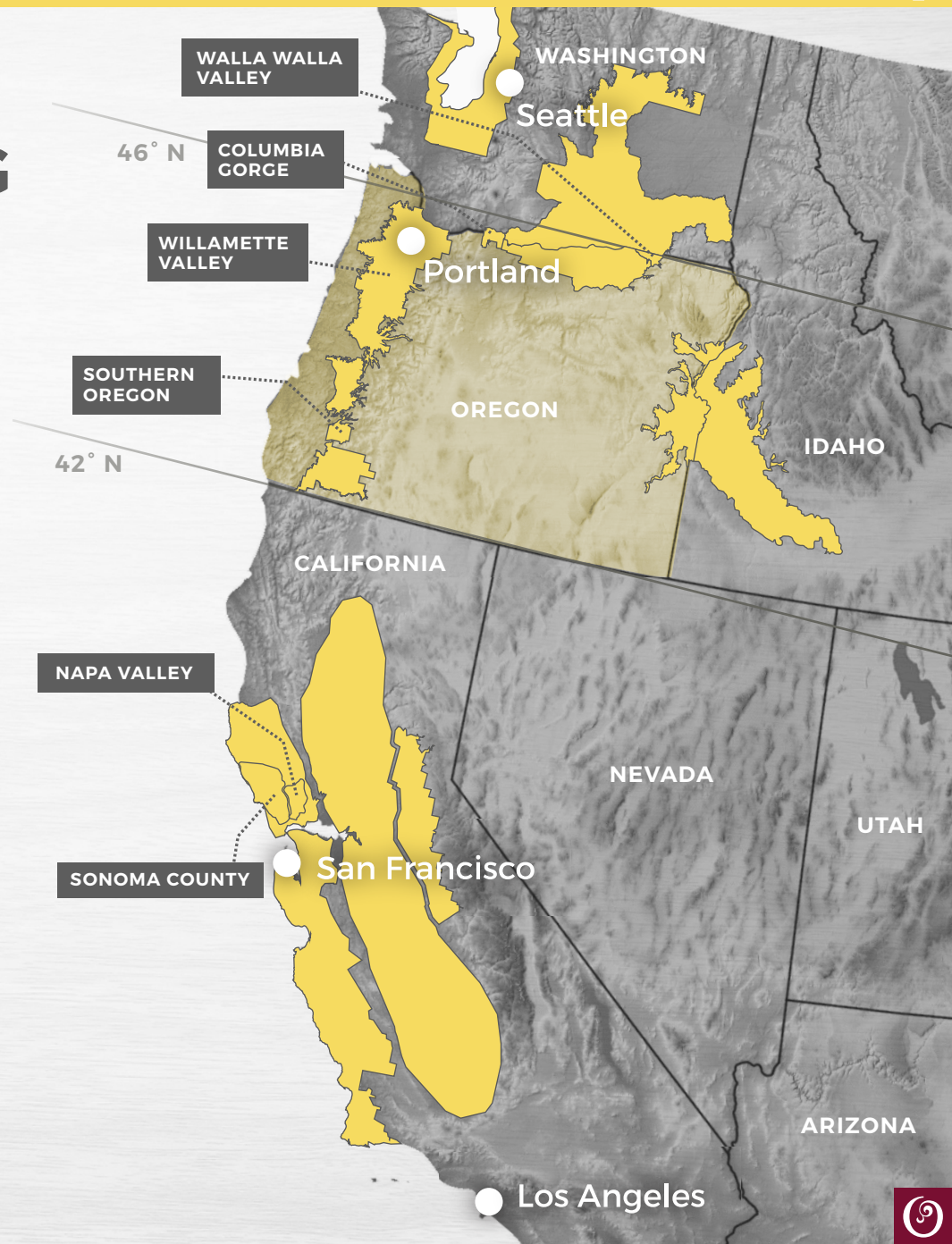
The world's premier winegrowing regions are found between the latitudes of 30-50°. Oregon is located in the northwestern United States at a northerly latitude between 42-46° N.

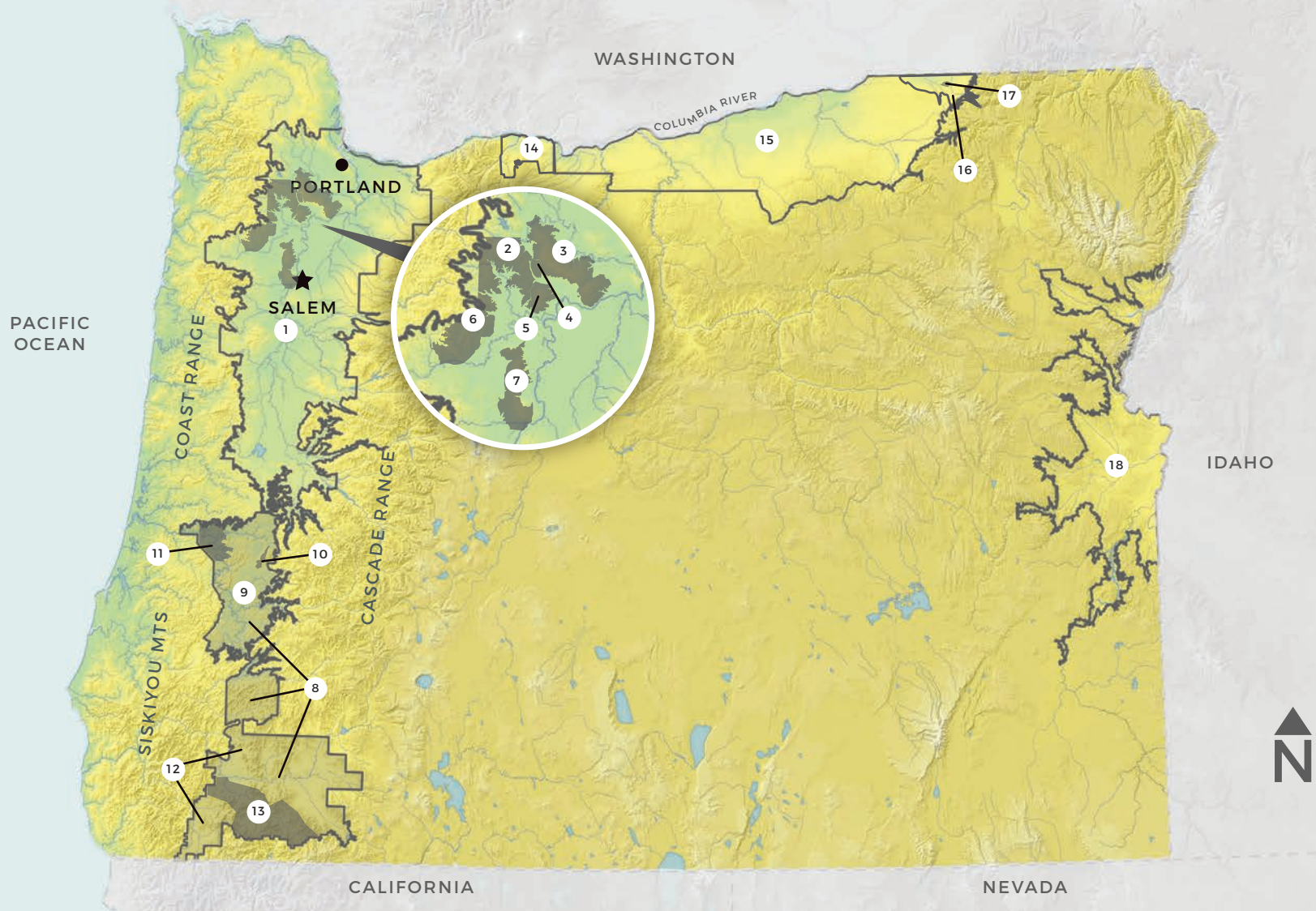


WINE-PRODUCING REGIONS OF THE WEST COAST

Oregon is bordered by Washington to the north and California to the south.

From northern Washington to southern California, West Coast winegrowing spans more than 1,200 miles (1,900 km) north to south.

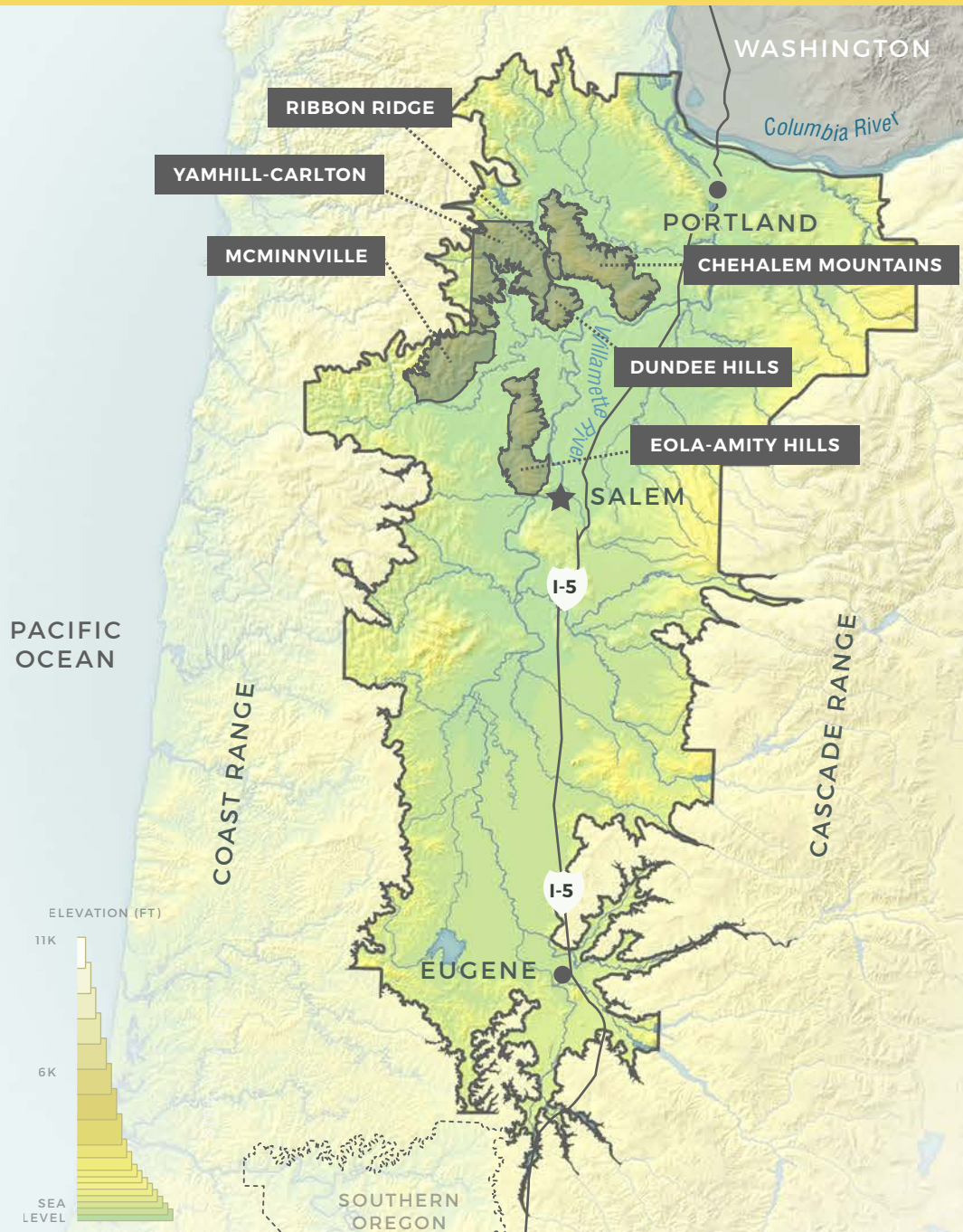




GROWING REGIONS OF OREGON

- | | | | |
|-----------------------|-----------------------------|----------------------|--|
| 1. Willamette Valley | 6. McMinnville | 11. Elkton Oregon | 16. Walla Walla Valley |
| 2. Yamhill-Carlton | 7. Eola-Amity Hills | 12. Rogue Valley | 17. The Rocks District of Milton-Freewater |
| 3. Chehalem Mountains | 8. Southern Oregon | 13. Applegate Valley | 18. Snake River Valley |
| 4. Ribbon Ridge | 9. Umpqua Valley | 14. Columbia Gorge | |
| 5. Dundee Hills | 10. Red Hill Douglas County | 15. Columbia Valley | |





WILLAMETTE VALLEY

Established: 1983

Planted Area: 19,300 acres (7,800 ha)

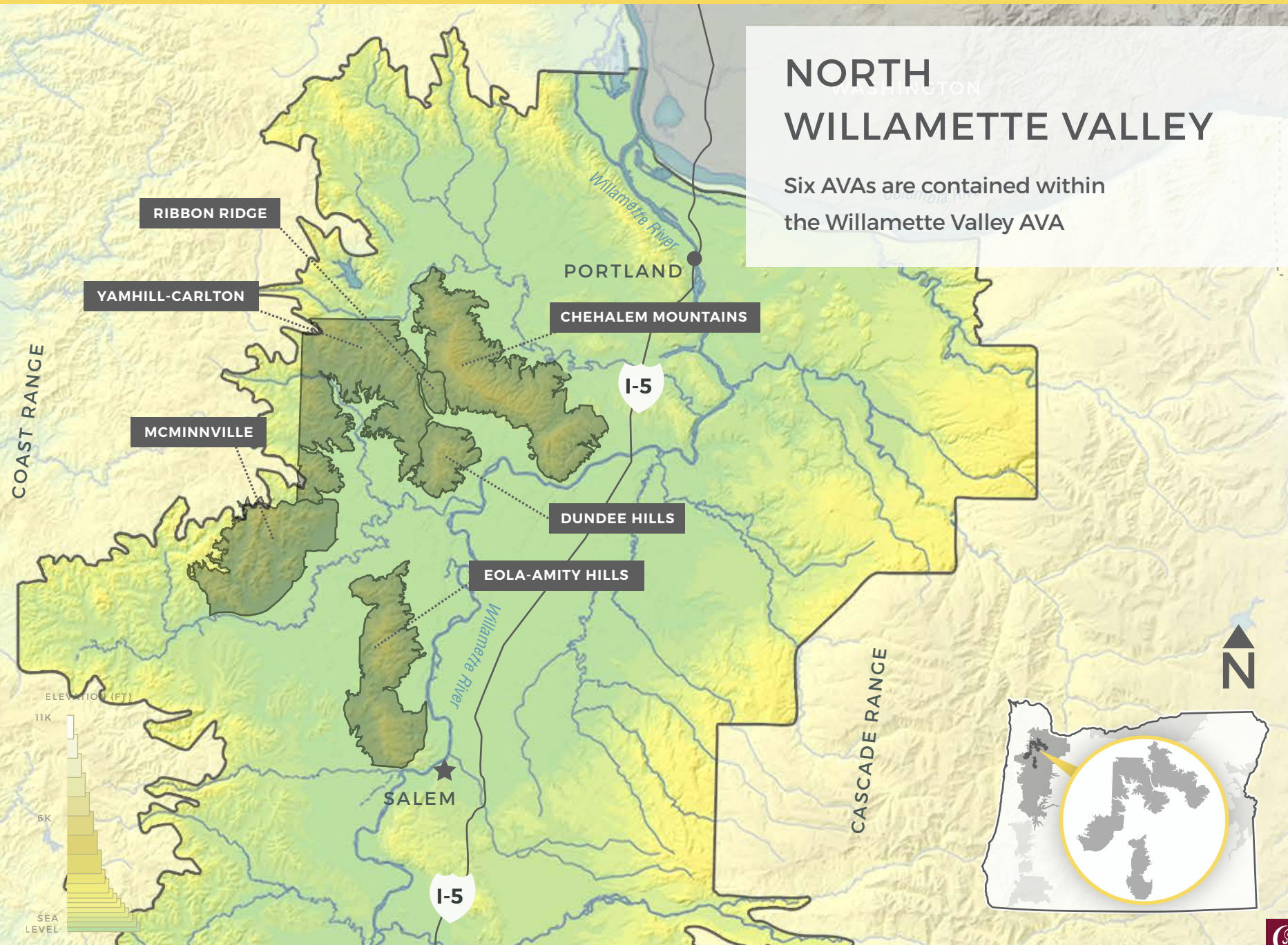
Predominant Soils: Marine sedimentary, volcanic, loess

Predominant Varieties: Pinot noir, Pinot gris, Chardonnay, Riesling, Pinot blanc



NORTH WILLAMETTE VALLEY

Six AVAs are contained within the Willamette Valley AVA



RIBBON RIDGE

YAMHILL-CARLTON

MCMINNVILLE

CHEHALEM MOUNTAINS

DUNDEE HILLS

EOLA-AMITY HILLS

PORTLAND

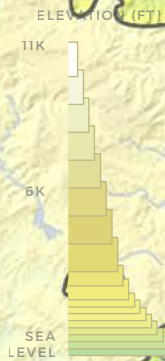
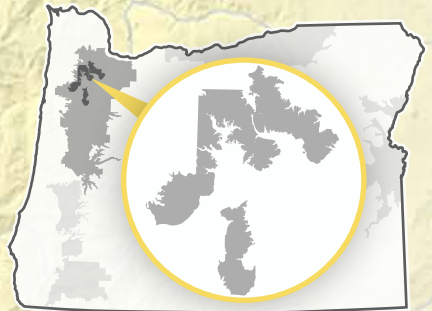
SALEM

I-5

I-5

COAST RANGE

CASCADE RANGE



WILLAMETTE VALLEY



One of the coolest winegrowing regions in North America that reliably produces quality *vinifera* wine.

Northerly latitude provides extended hours of crucial sunlight during the growing season to ensure ripeness.

Complex soils with great diversity in composition and depth yield endless possibilities for site-specific Pinot noir and other cool-climate varieties.



Complex soils in a cool climate result in pure expressions of terroir. Fully developed fruit flavors are balanced by bright acidity and freshness.



LEFT COAST CELLARS, LEFT BANK VINEYARDS

Image: ©Andrea Johnson Photography





KING ESTATE VINEYARD

Image: King Estate





MONTINORE ESTATE

Image: Montinore Estate



“

Long before sustainability, organic and biodynamics, this community was talking about farming, caring for the soil and working together. When we got here, we asked for help and we were invited to sit at their kitchen table. This was a community focused on craft and not prestige.

”

- MONTE PITT

Patton Valley Vineyard

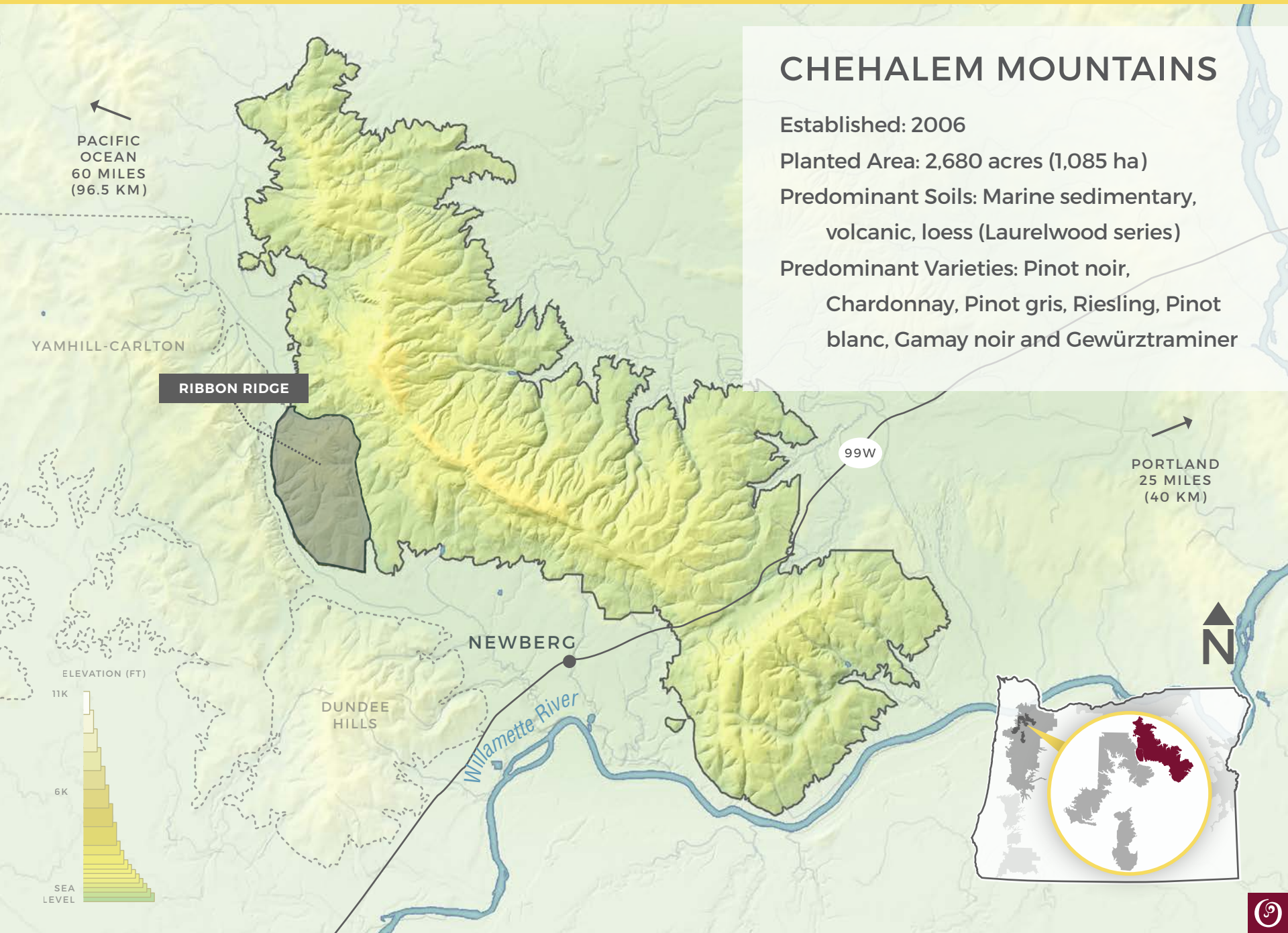
WILLAMETTE VALLEY AVA

OREGON WINE

WILLAMETTE VALLEY: CHEHALEM MOUNTAINS



OREGON
WINE
BOARD



CHEHALEM MOUNTAINS

Established: 2006

Planted Area: 2,680 acres (1,085 ha)

Predominant Soils: Marine sedimentary, volcanic, loess (Laurelwood series)

Predominant Varieties: Pinot noir, Chardonnay, Pinot gris, Riesling, Pinot blanc, Gamay noir and Gewürztraminer

PACIFIC OCEAN
60 MILES
(96.5 KM)

YAMHILL-CARLTON

RIBBON RIDGE

99W

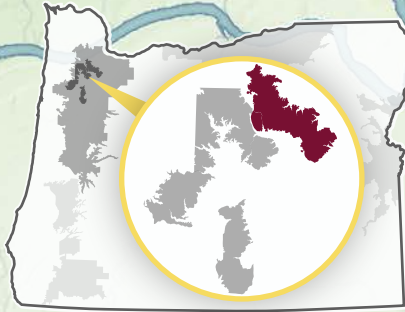
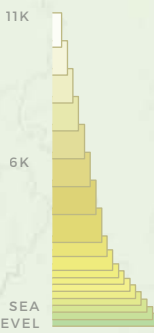
PORTLAND
25 MILES
(40 KM)

NEWBERG

DUNDEE HILLS

Willamette River

ELEVATION (FT)



CHEHALEM MOUNTAINS



Defined by a distinct ridge in the northern Willamette Valley with vineyard elevations spanning from 200 to 1,000 feet (60-300m).

Home to the highest point in the Willamette Valley, Bald Peak, at 1,637 feet (499m), which shelters vineyards from strong winds.

Offers a diverse compilation of volcanic, marine sedimentary and loess Laurelwood soils.



The cool climate and endless combinations of soils and elevations produce wines with defined structure offering notes of strawberries and cherries in cooler vintages and darker fruit in riper years.



PONZI AURORA VINEYARD

Image: Polara Studio





COOPER MOUNTAIN JOHNSON SCHOOL VINEYARD

Image: Cooper Mountain





In 1978, we built the first winery in the Chehalem Mountains. As our company matured, we bought grapes and even leased vineyards all over the north Willamette Valley and in all of its AVAs. We keep being drawn back to the Chehalem Mountains because we love the diversity of soils, elevations and site topography available here. And because, ultimately, this is our home, where we first planted our flag.



- DAVID ADELSHEIM
Adelsheim Vineyard
CHEHALEM MOUNTAINS AVA

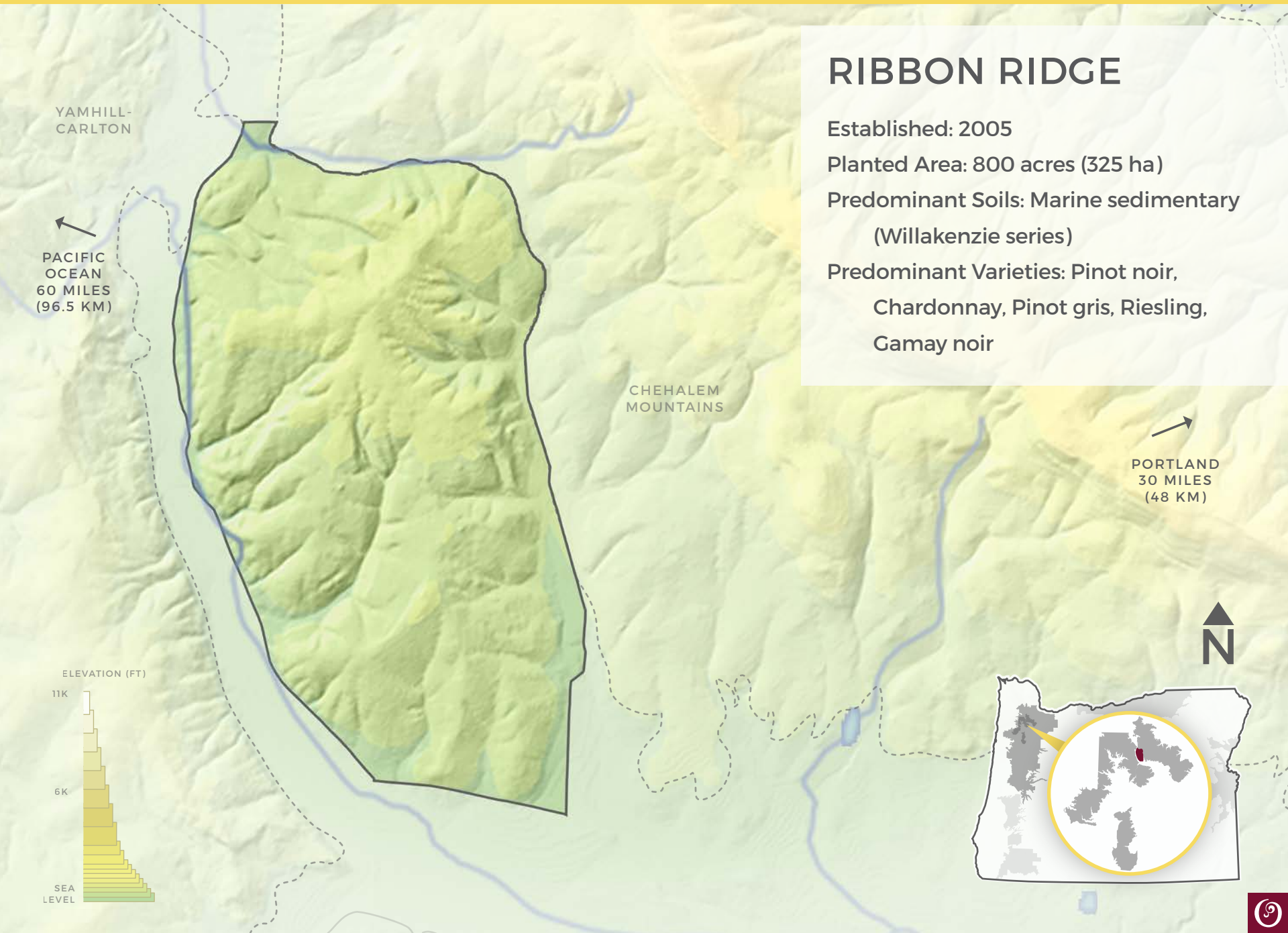


OREGON WINE

WILLAMETTE VALLEY: RIBBON RIDGE



OREGON
WINE
BOARD



RIBBON RIDGE

Established: 2005

Planted Area: 800 acres (325 ha)

Predominant Soils: Marine sedimentary
(Willakenzie series)

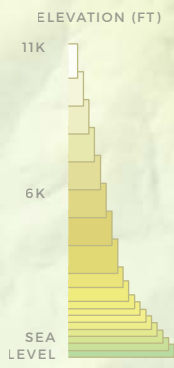
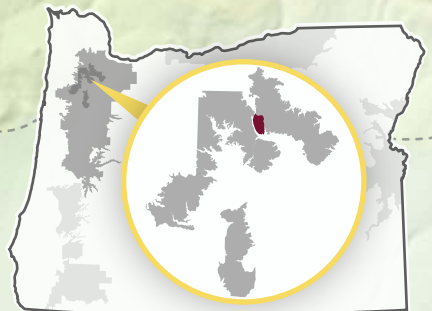
Predominant Varieties: Pinot noir,
Chardonnay, Pinot gris, Riesling,
Gamay noir

YAMHILL-CARLTON

PACIFIC OCEAN
60 MILES
(96.5 KM)

CHEHALEM MOUNTAINS

PORTLAND
30 MILES
(48 KM)



RIBBON RIDGE



A 6.1 square mile (15.8 square km) ridge within the Chehalem Mountains AVA, rising 683 feet (194m) from the valley floor, giving it an island-like appearance.

Composed entirely of marine sedimentary Willakenzie soil, which offers good water-holding capability but low nutrients to restrain vine vigor.

Lower elevation than surrounding AVAs and shielded from the winds, resulting in warmer temperatures and less rainfall.



Willakenzie soil combined with warmer climate produces Pinot noirs with rose petal, dark cherry, earthiness and spice complexity.



CHEHALEM RIDGECREST VINEYARD

Image: ©Andrea Johnson Photography





HALLIDAY HILL VINEYARD





UTOPIA VINEYARD



“

Biodynamic and organic farming is part of most Ribbon Ridge winegrowers' philosophy and practice. We do not want to rush nature, so we take the time to watch our vines grow and make sure we are taking the best possible care of them.

”

- DAN WARNSHUIS

Utopia Vineyard

RIBBON RIDGE AVA

“

Given that the ridgetop runs from north to south, Ribbon Ridge offers a variety of exposures – both east and west facing as well as full south and some northern exposures. The diversity is a gift to winemakers who understand that from year to year, different exposures offer different benefits, to be optimized come time to pick the fruit.

”

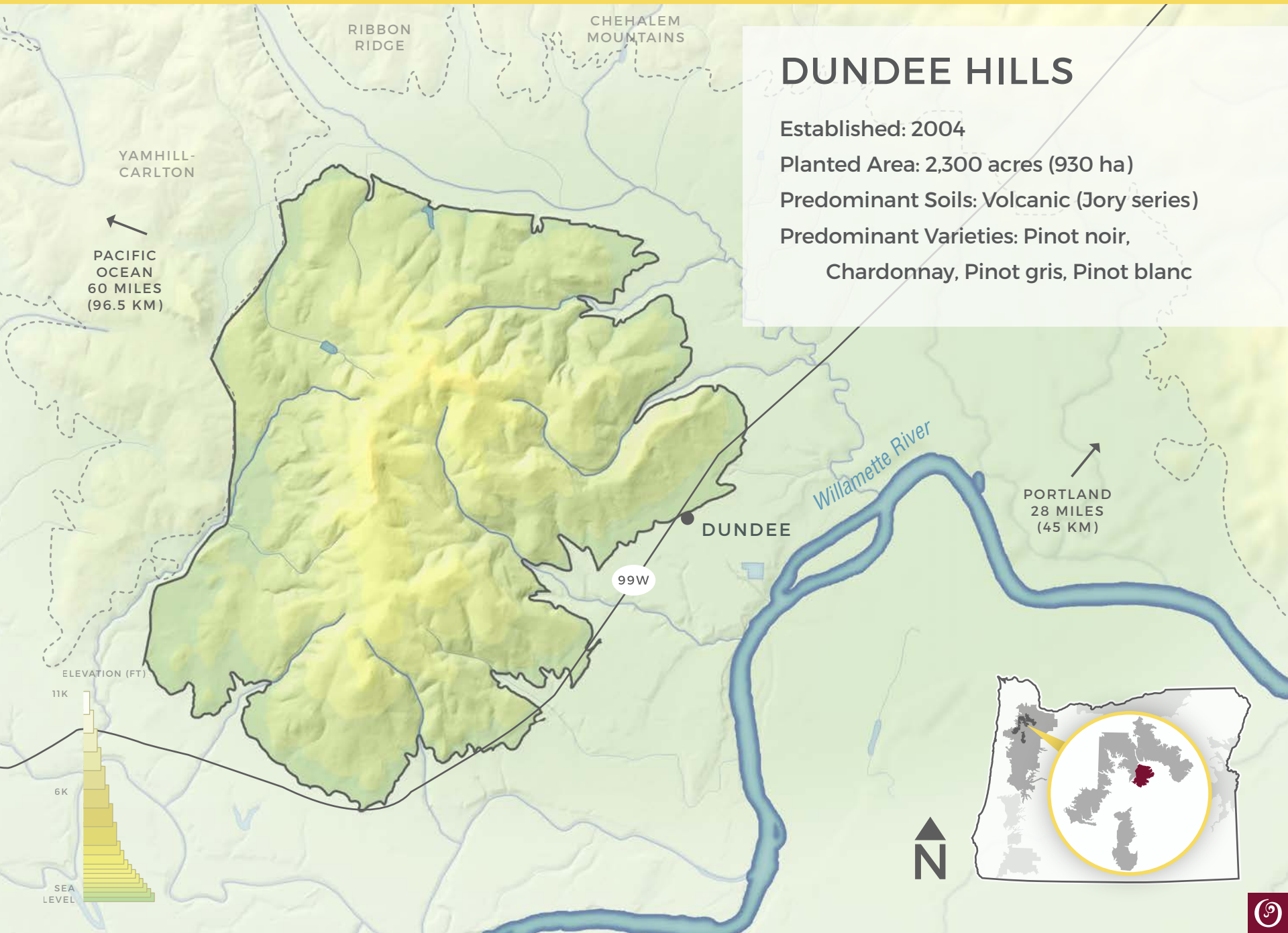
- DOUG TUNNELL
Brick House Wines
RIBBON RIDGE AVA

OREGON WINE

WILLAMETTE VALLEY: DUNDEE HILLS



OREGON
WINE
BOARD



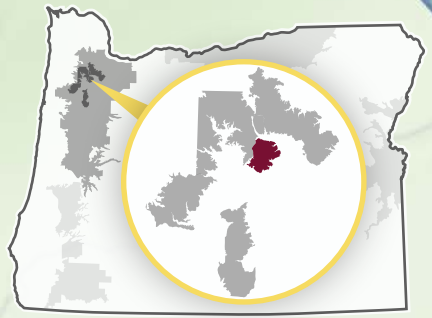
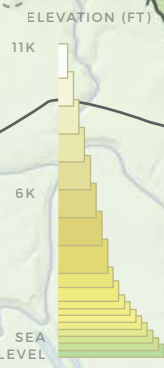
DUNDEE HILLS

Established: 2004

Planted Area: 2,300 acres (930 ha)

Predominant Soils: Volcanic (Jory series)

Predominant Varieties: Pinot noir,
Chardonnay, Pinot gris, Pinot blanc



DUNDEE HILLS



Home of Jory, a volcanic soil known for excellent drainage.

Slightly warmer than other Willamette Valley AVAs due to being nestled between the Coast Range and Chehalem Mountains, which protect vineyards from harsh winds from the Pacific Ocean and Columbia Gorge.



Ideal climate combined with ancient, complex Jory soil produces Pinot noir with bright, elegant red fruit, earthy, truffle-like flavors and a silky mouthfeel.



WINDERLEA VINEYARD

Image: CWK Photography

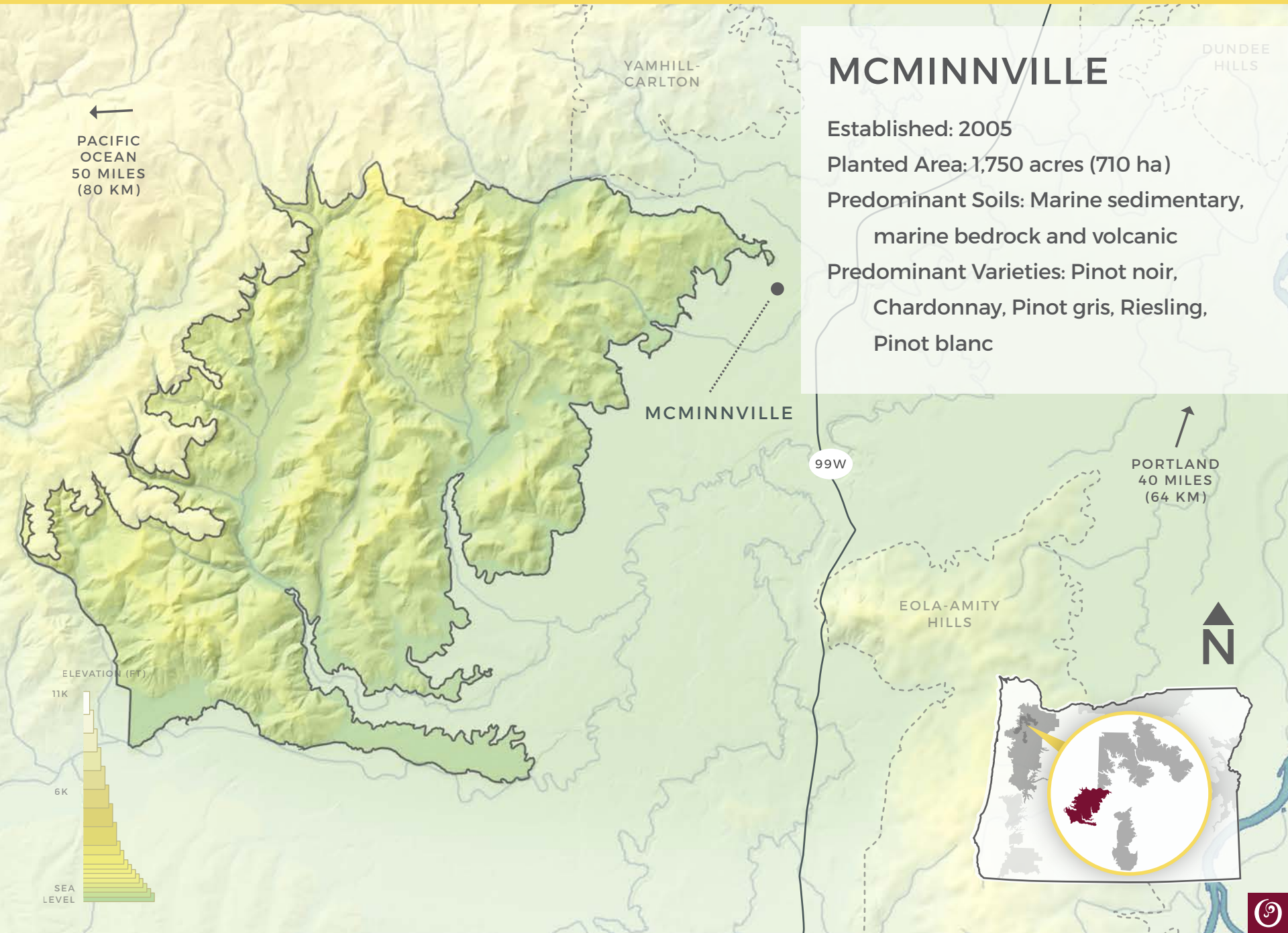


OREGON WINE

WILLAMETTE VALLEY: MCMINNVILLE



OREGON
WINE
BOARD



MCMINNVILLE

Established: 2005

Planted Area: 1,750 acres (710 ha)

Predominant Soils: Marine sedimentary,
marine bedrock and volcanic

Predominant Varieties: Pinot noir,
Chardonnay, Pinot gris, Riesling,
Pinot blanc

←
PACIFIC OCEAN
50 MILES
(80 KM)

DUNDEE HILLS

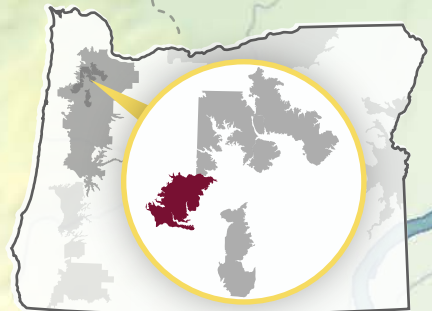
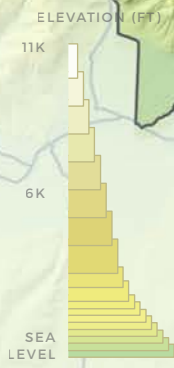
YAMHILL-CARLTON

MCMINNVILLE

99W

↑
PORTLAND
40 MILES
(64 KM)

EOLA-AMITY HILLS



MCMINNVILLE



Weathered soils sit on top of unique marine bedrock, called the Nestucca Formation, forcing vines to struggle and produce complex fruit.

The Van Duzer Corridor to the south provides a gap for cool ocean winds to blow through, dropping temperatures dramatically in the late afternoon, retaining grapes' acidity.



Elevation and geography ripen fruit slowly, resulting in Pinot noir with a strong backbone of tannin exhibiting darker fruit flavors rounded out by spice, mineral and earth notes. White wines are bright and fruit-forward.



HYLAND VINEYARD

Image: CWK Photography





YOUNGBERG HILL

Image: CWK Photography 



MOMTAZI VINEYARD

Image: ©Andrea Johnson Photography





BRITTAN VINEYARDS

Image: ©Andrea Johnson Photography



“

With our focus on growing Pinot noir, we were looking for a cooler site. Being at a higher altitude and closer to the ocean provides growing conditions that ripen fruit slowly, achieving good structure and higher acidity with mineral and earthy characteristics backing up more prominent black fruit flavors.

”

- WAYNE BAILEY

Youngberg Hill

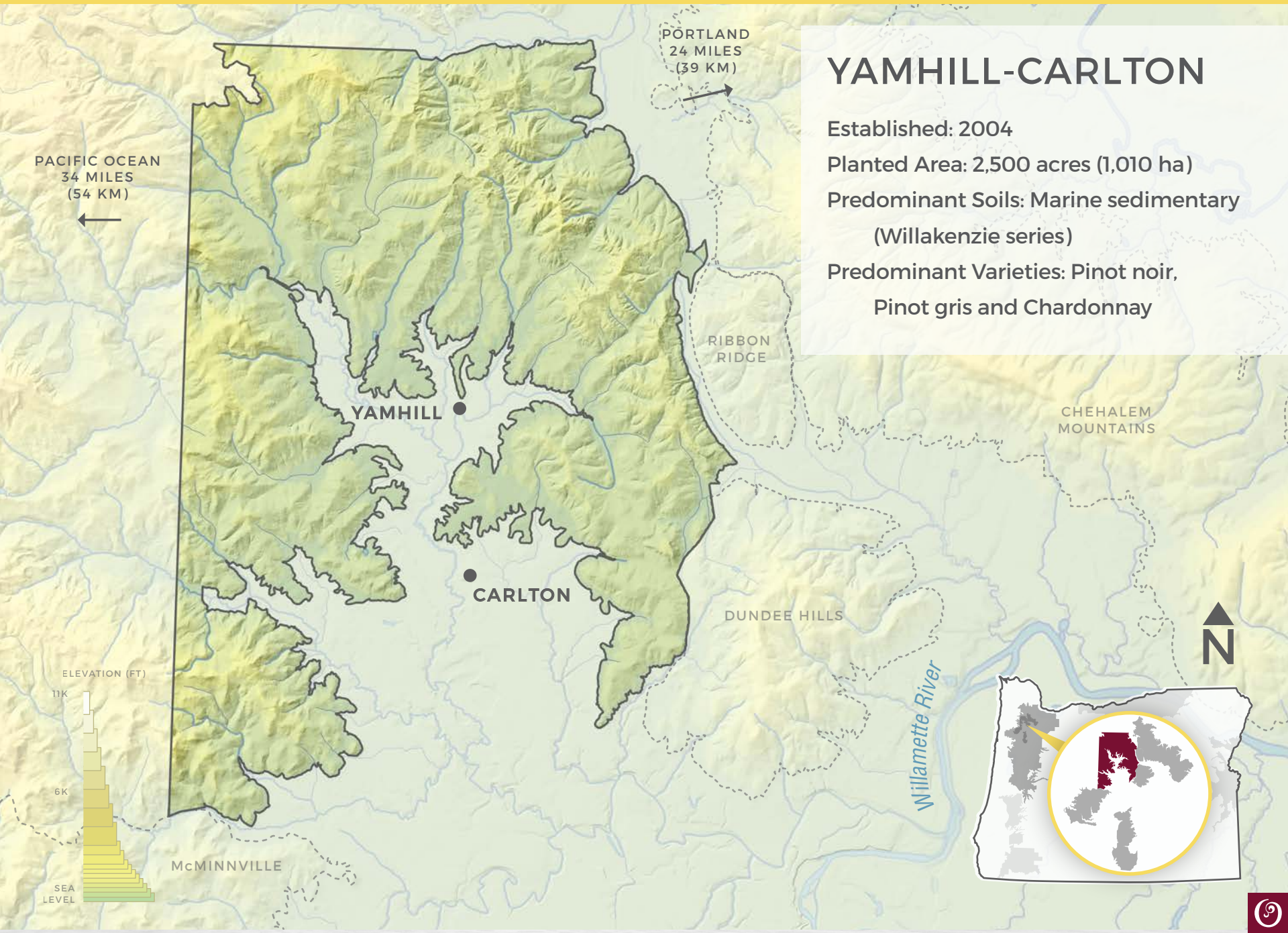
MCMINNVILLE AVA

OREGON WINE

WILLAMETTE VALLEY:
YAMHILL-CARLTON



OREGON
WINE
BOARD



YAMHILL-CARLTON

Established: 2004

Planted Area: 2,500 acres (1,010 ha)

Predominant Soils: Marine sedimentary
(Willakenzie series)

Predominant Varieties: Pinot noir,
Pinot gris and Chardonnay

PACIFIC OCEAN
34 MILES
(54 KM)

PORTLAND
24 MILES
(39 KM)

YAMHILL

CARLTON

RIBBON
RIDGE

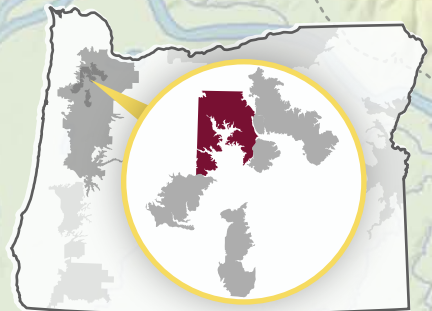
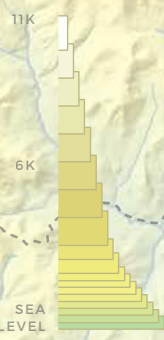
CHEHALEM
MOUNTAINS

DUNDEE HILLS

Willamette River

McMINNVILLE

ELEVATION (FT)



YAMHILL-CARLTON



Composed entirely of marine sedimentary Willakenzie soil, which offers good water-holding capability but low nutrients to restrain vine vigor.

Protected from extreme weather and winds by the Coast Range and Chehalem Mountains resulting in warmer vineyards, often with the earliest harvest dates in the Willamette Valley.



Willakenzie soil and warmer micro-climate produce ripe, texturally driven wines with an abundance of spice and floral qualities layered onto dark fruit flavors.



MOUNT RICHMOND VINEYARD

Image: Anna Campbell





LUMINOUS HILLS VINEYARD

Image: Byron Dooley





ANNE AMIE



“

**Why did we set up shop in Yamhill-Carlton?
The distinct soil, unique microclimate and
dramatic elevations and aspects of
Yamhill-Carlton took our breaths away.**

”

- BYRON DOOLEY

Seven of Hearts and Luminous Hills

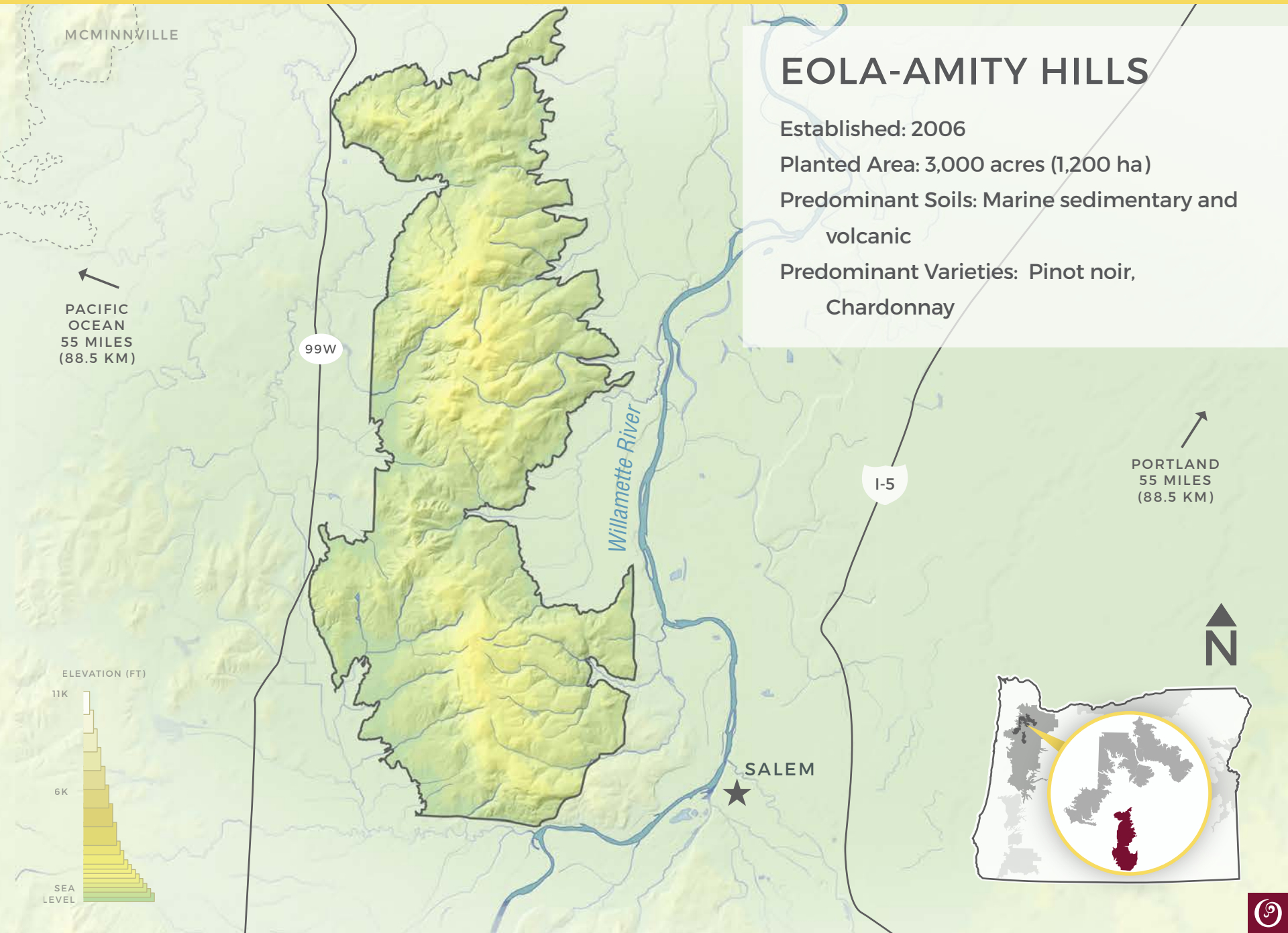
YAMHILL-CARLTON AVA

OREGON WINE

WILLAMETTE VALLEY: EOLA-AMITY HILLS



OREGON
WINE
BOARD



MCMINNVILLE

PACIFIC OCEAN
55 MILES
(88.5 KM)

99W

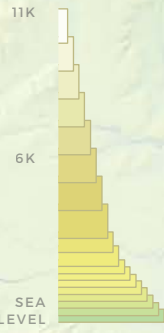
Willamette River

I-5

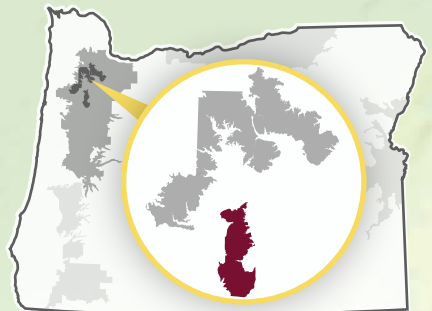
PORTLAND
55 MILES
(88.5 KM)

N

ELEVATION (FT)



SALEM



EOLA-AMITY HILLS

Established: 2006

Planted Area: 3,000 acres (1,200 ha)

Predominant Soils: Marine sedimentary and volcanic

Predominant Varieties: Pinot noir, Chardonnay



EOLA-AMITY HILLS



Defined by the Van Duzer Corridor, which provides a gap for cool ocean winds to blow through, dropping temperatures dramatically in the late afternoon, helping to retain grapes' acidity.

Volcanic soils are generally shallower and rockier than those of other Willamette Valley AVAs, making them well-drained and extending hang time for fruit during final ripening.



Complex soils and the cooling winds through the Van Duzer Corridor produce wines with high acidity, firm structure and a darker, edgier personality.



CRISTOM EILEEN VINEYARD

Image: John D'Anna





EVENING LAND SEVEN SPRINGS VINEYARD

Image: ©Andrea Johnson Photography





TEMPERANCE HILL VINEYARD

Image: Dai Crisp



“

There is a tension to the wines from the Eola-Amity Hills, brought about by rocky, basalt clay soils coupled with the influence of the Van Duzer winds. These two factors contribute to a combination of elegance and power in the wines.

”

- KEN PAHLOW AND ERICA LANDON

Walter Scott Wines

EOLA-AMITY HILLS AVA



It was 1977. We had decided we wanted to establish a vineyard somewhere where great wine could be grown. We heard reports of interesting things happening in the Willamette Valley, when we saw a small ad for a 75-acre parcel near Salem that claimed to be ‘ideal for wine grapes.’ And so it was. We looked no further.



- TED CASTEEL & PAT DUDLEY,
TERRY CASTEEL & MARILYN WEBB

Bethel Heights Vineyard

EOLA-AMITY HILLS AVA

